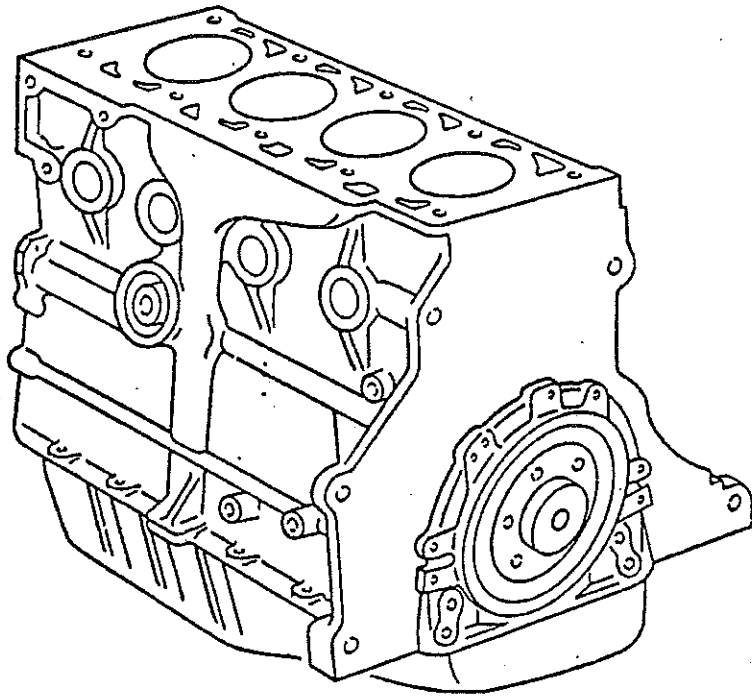


1984 GRUMMAN OLSON KUBVAN

ILLUSTRATED PARTS MANUAL

Engine
Water cooling
Fuel system
Clutch
Brake Booster

Portions of this manual are copyrighted 1983
Volkswagen of America, Inc.
Reprinted by permission of VWoA



1

ILLUSTRATION 1

SHORT ENGINE WITH CRANKSHAFT
PISTONS, OIL PUMP AND OIL SUMP

KEY	PART NO.	DESCRIPTION	QUANTITY
1	V068 100 103 LX	SHORT-ENGINE 1.6 LITER (RE-MANUFACTURED)	1

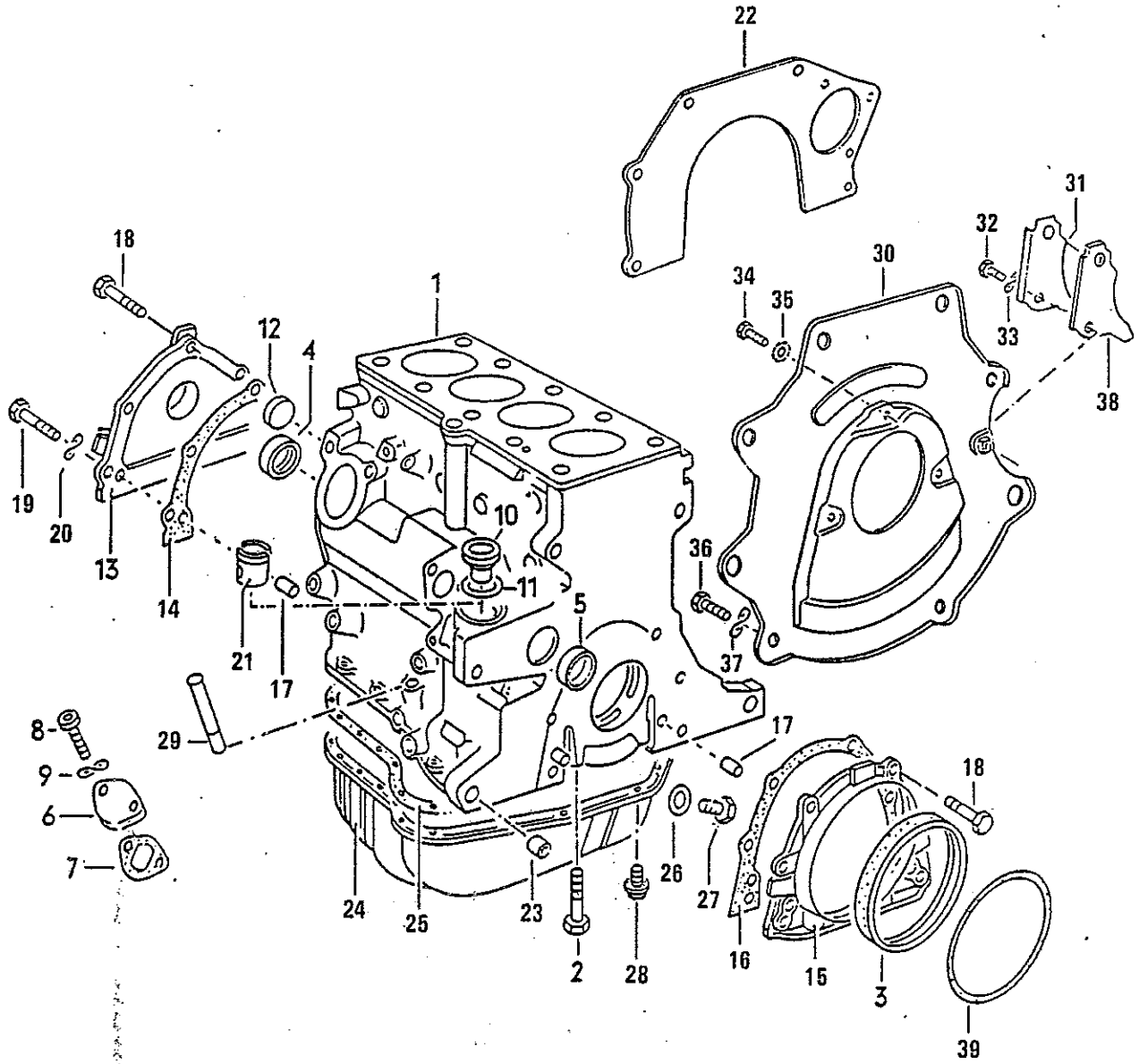


ILLUSTRATION 2
CYLINDER BLOCK, OIL SUMP

KEY	PART NO.	DESCRIPTION	QUANTITY
1	V068 103 101B	CYLINDER BLOCK W/PISTONS	1
2	VN 010 465 5	BOLT, HEX. HD. M 10X65, FOR CRANKSHAFT BEARING CAP	10
3	V056 103 051 D	SEALING WASHER 105X85	1
4	V068 103 085 A	SEAL	1
5	V059 103 113	CAP	4
6	V063 103 113	COVER	1
7	V059 127 311 A	GASKET	1
8	VN 014 712 3	SCREW, CHEESE HD. M 8X18	1
9	VN 012 226 5	SPRING WASHER, B6	1
10	V068 103 113 B	COVER	1
11	V056 905 261	SEAL	1
12	VN 011 907 4	CAP 14	2
13	V068 103 153	SEALING FLANGE	1
14	V056 103 161	GASKET	1
15	V055 103 173 B	SEALING FLANGE	1
16	V052 103 181	GASKET	1
17	VN 043 207 2	DOWEL PIN 8H8X14	4
18	VN 090 245 2	BOLT, HEX. HD. M 6X18 Z3	X
19	VN 010 240 16	BOLT, HEX. HD. M 8X20	1
20	VN 012 241 11	SPRING WASHER B 8X15	1
21	V056 103 541	BUSHING FOR DISTRIBUTOR AND OIL PUMP	1
22	V055 103 551 VN 090 264 1	INTERMEDIATE PLATE BOLT, HEX. HD. M 8X16 FOR FASTENING INTERMEDIATE PLATE	1 2
23	V014 301 153	SLEEVE	2
24	V049 103 601	OIL PAN	1
25	V056 103 609 B	GASKET	1
26	VN 013 849 2	SEAL A 14X20	1
27	VN 016 155 4	PLUG AM 14X1.5	1
28	VN 900 084 01	BOLT, HEX. HD. M 6X14	20
29	V049 103 635	TUBE FOR OIL DIPSTICK	1
30	V055 103 645	COVER PLATE FOR CLUTCH	1
31	V055 103 648 E	COVER PLATE	1
32	VN 010 208 5	BOLT, HEX. HD. M 6X8	1
33	VN 012 226 5	SPRING WASHER, B6	1
34	VN 010 210 7	BOLT, HEX. HD. M 6X10 K	3
35	VN 015 369 1	SHAKE PROOF WASHER 6.4	3
36	VN 010 227 4	BOLT, HEX. HD. M 7X12	3
37	VN 012 234 5	SPRING WASHER B 7	3
38	V055 103 649 A	GASKET	1
39	V055 103 650 A	GASKET	1

- 6
- 6
- 7
- 14
- 19

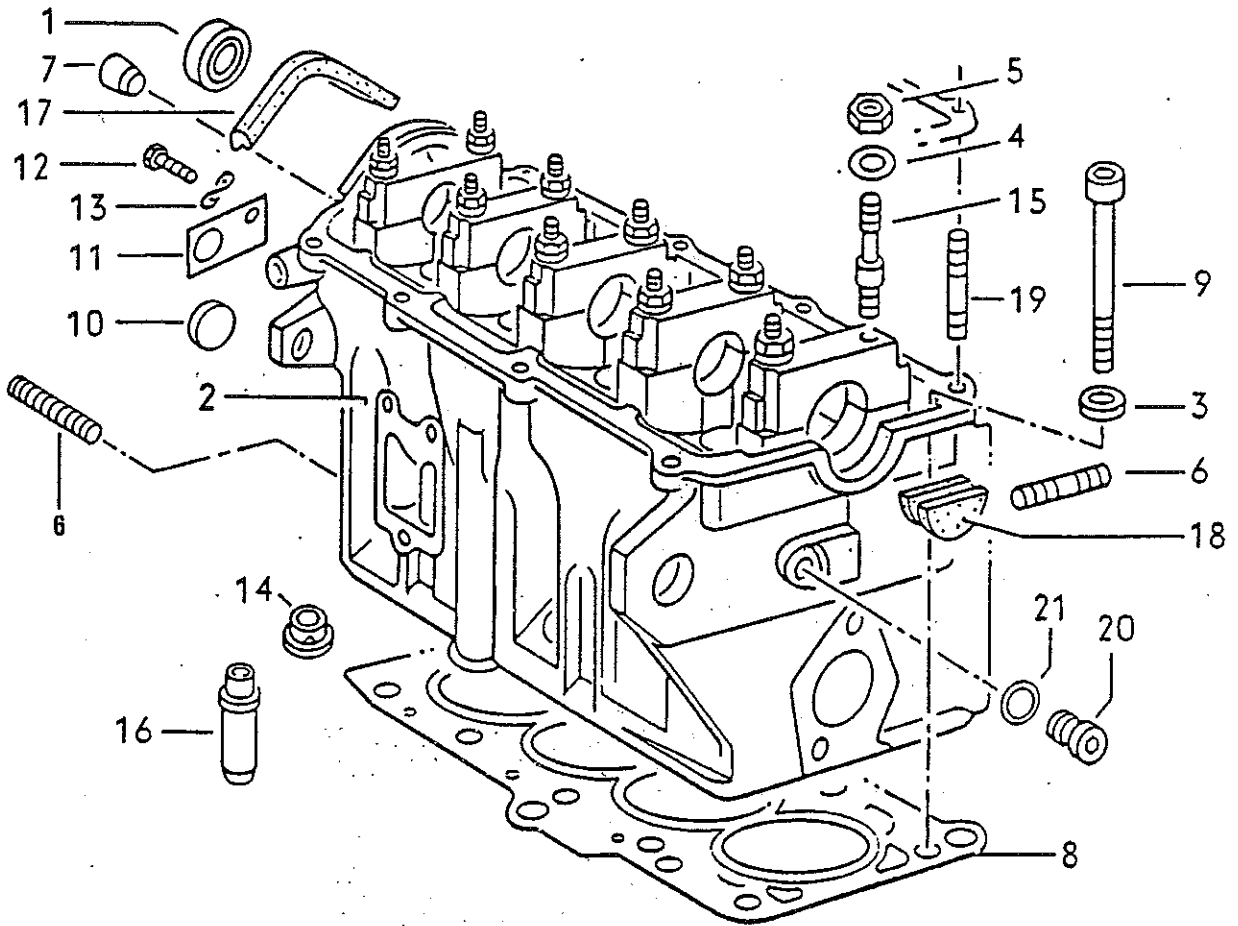


ILLUSTRATION 3

CYLINDER HEAD

KEY	PART NO.	DESCRIPTION	QUANTITY
1	V068 103 085 A	SEAL	1
2	V068 103 265 CX	CYLINDER HEAD (REMANUFACTURED)	1
3	VN 901 157 01	WASHER 12.5X23	10
4	VN 011 558 6	WASHER 8.4	10
5	VN 011 008 8	NUT, HEX. M 8	10
6	VN 044 411 3	STUD AM 8X30	8
(6)	VN 900 803 01	STUD M 10X45	1
7	V056 103 379	PLUG 7.4 FOR OIL PASSAGE	1
(7)	V056 103 379 A	PLUG 8.0 OVERSIZE FOR OIL PASSAGE	X
8	V068 103 383 BC	CYLINDER HEAD GASKET 1.4MM (1 GROOVE)	X
(8)	V068 103 383 BD	CYLINDER HEAD GASKET 1.5MM (2 GROOVES)	X
(8)	V068 103 383 BE	CYLINDER HEAD GASKET 1.6MM (3 GROOVES)	X
9	V046 103 385	BOLT, CYLINDER HD. M 12X1.5X115 W/ALLEN SOCKET HEAD	10
10	VN 911 914 2	CAP 24	1
11	V068 103 390	BRACKET	1
12	VN 010 239 24	BOLT, HEX. HD. M 8X18	1
13	VN 012 241 11	SPRING WASHER B 8X15	1
14	V069 103 391	COMBUSTION CHAMBER INSERT	4
15	V056 103 397	STUD M 8X56	10
16	V056 103 419 A	VALVE GUIDE, INTAKE & EXHAUST	8
17	V156 103 489 A	SEALING STRIP	1
18	V049 103 491	HALF-ROUND GASKET	1
19	V056 103 400	STUD WITH SEAT M 6X28	8
(19)	VN 044 419 2	STUD M 6X15	X
20	VN 016 024 1	PLUG M10X1	1
21	VN 013 806 2	GASKET A 10X14	1
—	V056 103 651	CAMSHAFT BEARING 25.75 UNDER SIZE. USE ONLY WITH REBUILT CYLINDER HEAD	X
—	V056 103 652	CAMSHAFT BEARING 26.00 USE ONLY WITH REBUILT CYLINDER	X
—	V056 198 025	CYLINDER HEAD COVER GASKETS FOR VEHICLES WITH N 044 419 2 STUD M 6X15	1
—	V056 198 025 A	CYLINDER HEAD COVER GASKETS FOR VEHICLES WITH 056 103 400 STUD M 6X28	1

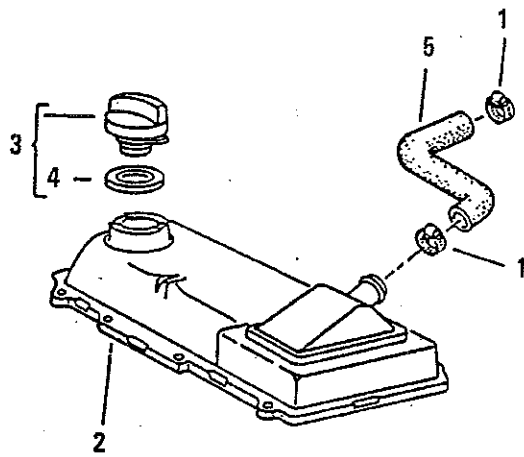


ILLUSTRATION 4
CYLINDER HEAD COVER

KEY	PART NO.	DESCRIPTION	QUANTITY
1	VN 024 511 3	CLAMP LA 23X35	X
2	V026 103 469	CYLINDER HEAD COVER	1
3	V049 103 485 A	CAP—OIL FILLER W/GASKET	1
4	V059 103 487	GASKET	1
5	V068 103 493 A	VENT HOSE TO INTAKE MANIFOLD	1

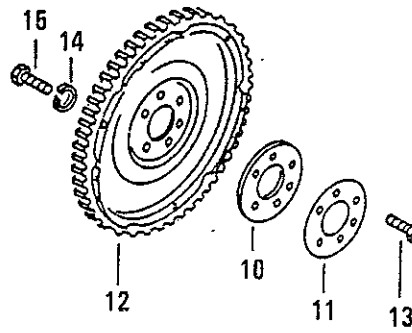
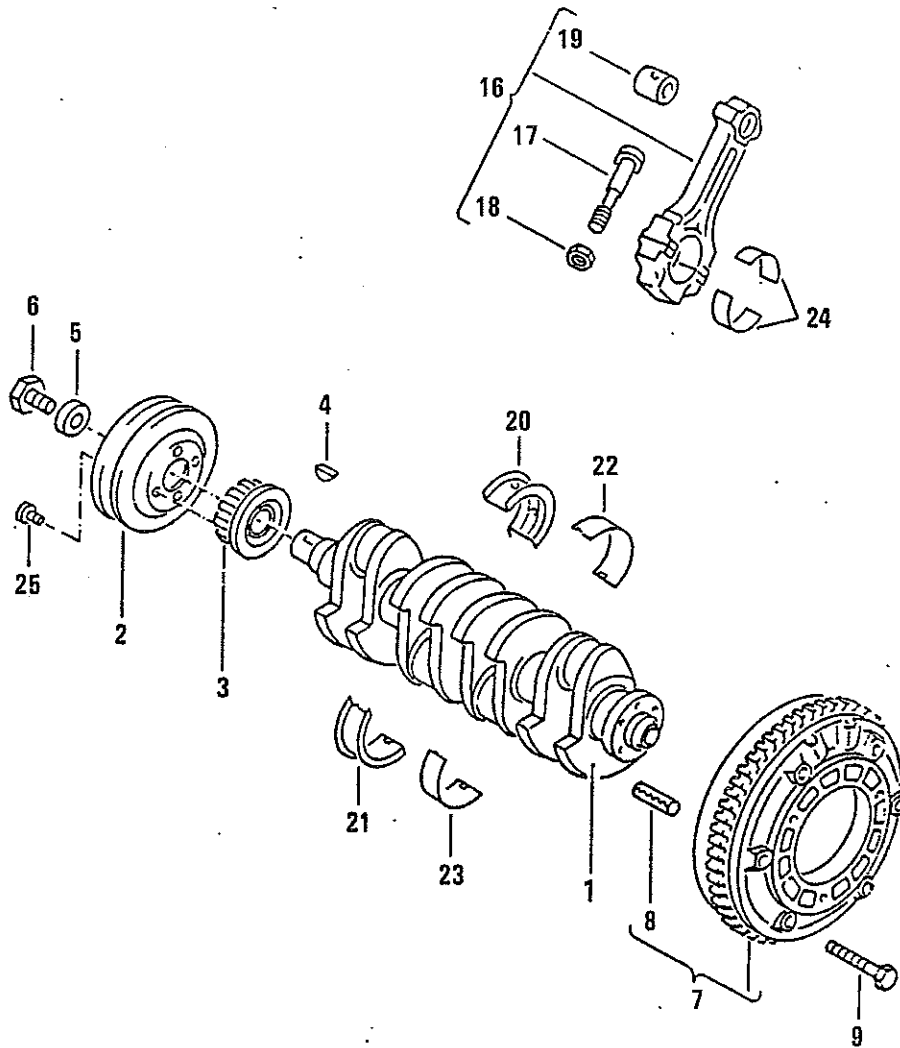


ILLUSTRATION 5

CRANKSHAFT

KEY	PART NO.	DESCRIPTION	QUANTITY
1	V068 198 351 AX	CRANKSHAFT, REMANUFACTURED	1
2	V068 105 255 H	PULLEY	1
3	V068 105 263 C	TIMING BELT PULLEY	1
4	VN 012 708 2	WOODRUFF KEY 4X5	1
5	V068 105 193	WASHER 19	1
6	VN 040 106 4	BOLT, HEX. HD. M 14X1.5X40	1
7	V067 105 271 K	FLYWHEEL 200 DIA.	1
8	V055 105 277	RETAINING PIN	2
9	VN 010 406 6	BOLT, HEX. HD. M 7X40	6
10	V056 105 301 A	WASHER (FOR AUTO. TRANS.)	1
11	V056 105 303	SHIM (FOR AUTO. TRANS.)	1
12	V068 105 323	CARRIER PLATE	1
13	VN 900 720 01	BOLT, HEX. HD. M 10X1X20	6
14	VN 012 008 6	LOCK RING B 8	4
15	V012 323 699	BOLT, HX HD	4
16	V068 198 401 B	1 SET OF CONNECTING RODS	1
17	V056 105 425 C	BOLT—CONNECTING ROD M 9.1	X
18	V056 105 427	NUT, HEX. M 9X1	8
19	V069 105 431 A	BUSHING—CONNECTING ROD	4
20	V056 105 501 B	BEARING SHELL, UPPER BEARING 3	1
(20)	V056 105 507 B	BEARING SHELL, UPPER 0.25 U.S. BEARING 3	X
(20)	V056 105 513 B	BEARING SHELL, UPPER 0.50 U.S. BEARING 3	X
(20)	V056 105 519 B	BEARING SHELL, UPPER 0.75 U.S. BEARING 3	X
21	V056 105 531 A	BEARING SHELL, LOWER BEARING 3	1
(21)	V056 105 537	BEARING SHELL, LOWER 0.25 U.S. BEARING 3	X
(21)	V056 105 543	BEARING SHELL, LOWER 0.50 U.S. BEARING 3	X
(21)	V056 105 549	BEARING SHELL, LOWER 0.75 U.S. BEARING 3	X
22	V056 105 561 B	BEARING SHELL, UPPER BEARING 1,2,4,5	4
(22)	V056 105 567 B	BEARING SHELL, UPPER 0.25 U.S. BEARING 1,2,4,5	X
(22)	V056 105 573 B	BEARING SHELL, UPPER 0.50 U.S. BEARING 1,2,4,5	X
(22)	V056 105 579 B	BEARING SHELL, UPPER 0.75 U.S. BEARING 1,2,4,5	X
23	V056 105 591 A	BEARING SHELL, LOWER BEARING 1,2,4,5	4
(23)	V056 105 597	BEARING SHELL, LOWER 0.25 U.S. BEARING 1,2,4,5	X
(23)	V056 105 603	BEARING SHELL, LOWER 0.50 U.S. BEARING 1,2,4,5	X
(23)	V056 105 609	BEARING SHELL, LOWER 0.75 U.S. BEARING 1,2,4,5	X
24	V069 105 701 A	CONNECTING ROD BEARING SHELL	8

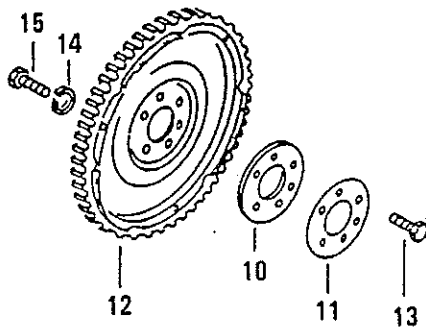
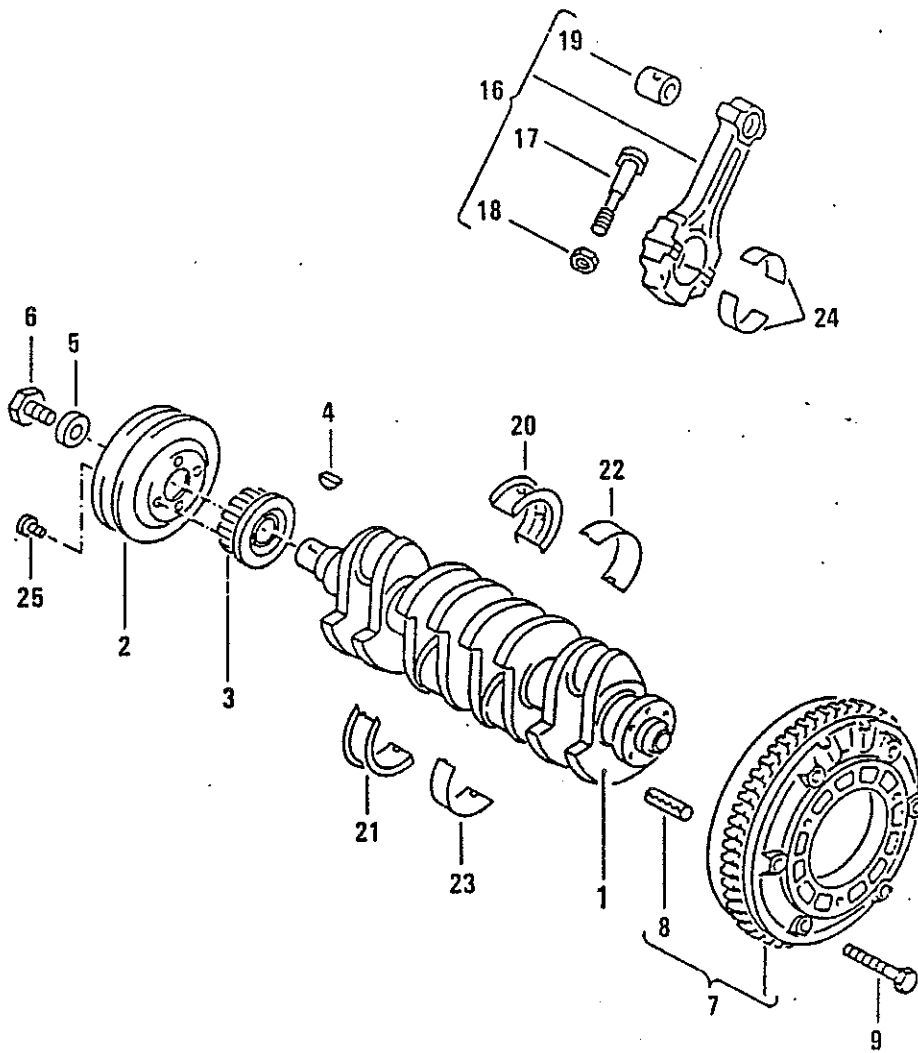


ILLUSTRATION 5 (cont'd)

CRANKSHAFT

KEY	PART NO.	DESCRIPTION	QUANTITY
(24)	V069 105 707 A	CONNECTING ROD BEARING SHELL 0.25 U.S.	X
(24)	V069 105 713 A	CONNECTING ROD BEARING SHELL 0.50 U.S.	X
25	VN 014 707 4	BOLT, FILSTR. HD. M 8X15 FOR DIESEL VEHICLES WITH POWER STEERING	4

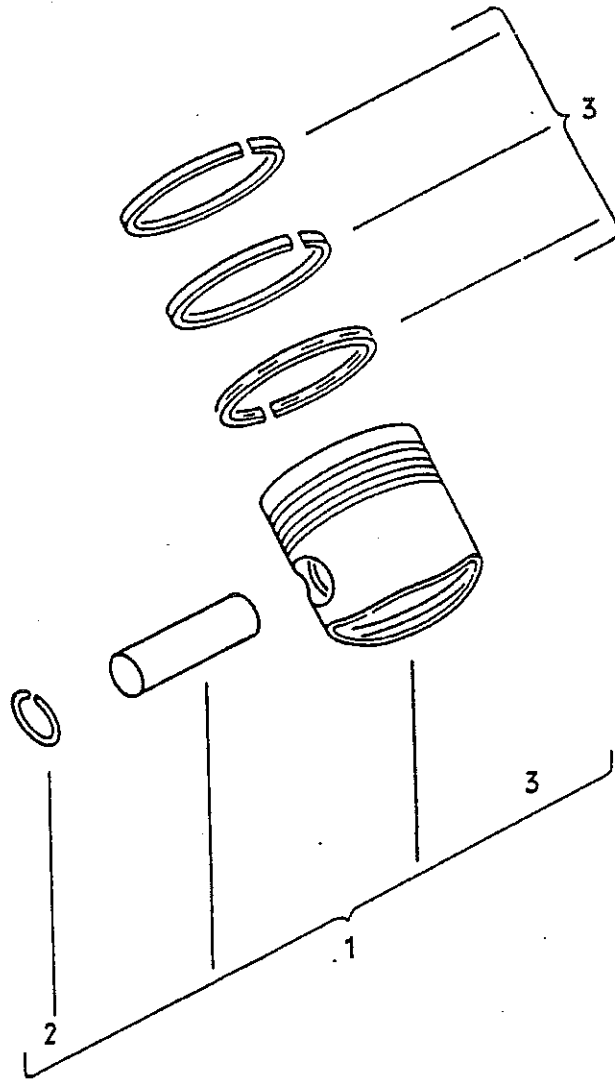


ILLUSTRATION 6
PISTON, PISTON RING

KEY	PART NO.	DESCRIPTION	QUANTITY
1	V068 107 065 E	PISTON COMPLETE 001 76.48, 003 76.50	4
(1)	V068 107 071 D	PISTON COMPLETE 76.75 OVERSIZE	X
(1)	V068 107 081 D	PISTON COMPLETE 77.00 OVERSIZE	X
(1)	V068 107 081 E	PISTON COMPLETE 77.00 OVERSIZE USE ONLY WITH 0.25 MM REWORKED CYLINDER HEAD FACE	4
(1)	V068 107 091 D	PISTON COMPLETE 77.50 OVERSIZE	X
(1)	V068 107 091 E	PISTON COMPLETE 77.50 OVERSIZE USE ONLY WITH 0.25 MM REWORKED CYLINDER HEAD	4
2	VN 012 277 1	LOCK RING C24	8
3	V068 198 151 A	1 SET OF PISTON RINGS 76.50	1
(3)	V068 198 153 A	1 SET OF PISTON RINGS 76.75 OVERSIZE	X
(3)	V068 198 155 A	1 SET OF PISTON RINGS 77.00 OVERSIZE	X
(3)	V068 198 157	1 SET OF PISTON RINGS 77.50 OVERSIZE	X
(3)	V068 198 157 A	1 SET OF PISTON RINGS 77.50 OVERSIZE	X

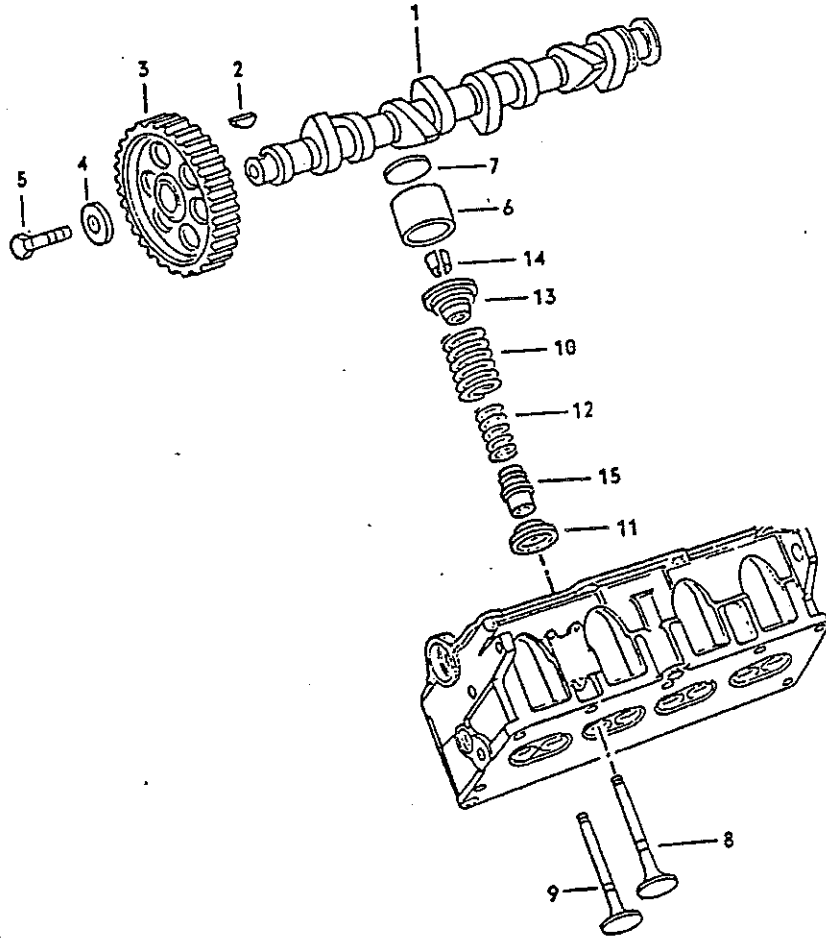


ILLUSTRATION 7
CAMSHAFT, VALVES

KEY	PART NO.	DESCRIPTION	QUANTITY
1	V068 109 101 B	CAMSHAFT	1
2	VN 012 708 2	WOODRUFF KEY 4.5	1
3	V069 109 111	TIMING BELT PULLEY	1
4	V181 405 423	WASHER	1
5	VN 010 137 1	BOLT, HEX. HD. M 12X1.5X35	1
6	V056 109 311 A	CAM FOLLOWER	8
7	V056 109 555	SHIM 3.00	X
(7)	V056 109 556	SHIM 3.05	X
(7)	V056 109 557	SHIM 3.10	X
(7)	V056 109 558	SHIM 3.15	X
(7)	V056 109 559	SHIM 3.20	X
(7)	V056 109 560	SHIM 3.25	X
(7)	V056 109 561	SHIM 3.30	X
(7)	V056 109 562	SHIM 3.35	X
(7)	V056 109 563	SHIM 3.40	X
(7)	V056 109 564	SHIM 3.45	X
(7)	V056 109 565	SHIM 3.50	X
(7)	V056 109 566	SHIM 3.55	X
(7)	V056 109 567	SHIM 3.60	X
(7)	V056 109 568	SHIM 3.65	X
(7)	V056 109 569	SHIM 3.70	X
(7)	V056 109 570	SHIM 3.75	X
(7)	V056 109 571	SHIM 3.80	X
(7)	V056 109 572	SHIM 3.85	X
(7)	V056 109 573	SHIM 3.90	X
(7)	V056 109 574	SHIM 3.95	X
(7)	V056 109 575	SHIM 4.00	X
(7)	V056 109 576	SHIM 4.05	X
(7)	V056 109 577	SHIM 4.10	X
(7)	V056 109 578	SHIM 4.15	X
(7)	V056 109 579	SHIM 4.20	X
(7)	V056 109 580	SHIM 4.25	X
8	V068 109 601 C	INTAKE VALVE	4
9	V068 109 611 C	EXHAUST VALVE	4
10	V056 109 623 A	VALVE SPRING, OUTER	8
11	V056 109 629 A	SPRING SEAT, LOWER	8
12	V056 109 633 A	VALVE SPRING, INNER	8
13	V049 109 641 A	SPRING SEAT, UPPER	8
14	V113 109 651 A	VALVE KEEPER	16
15	V035 109 675	SEAL—VALVE STEM (PACKING UNIT: 8 PCS. W/2 FITTING SLEEVES)	8

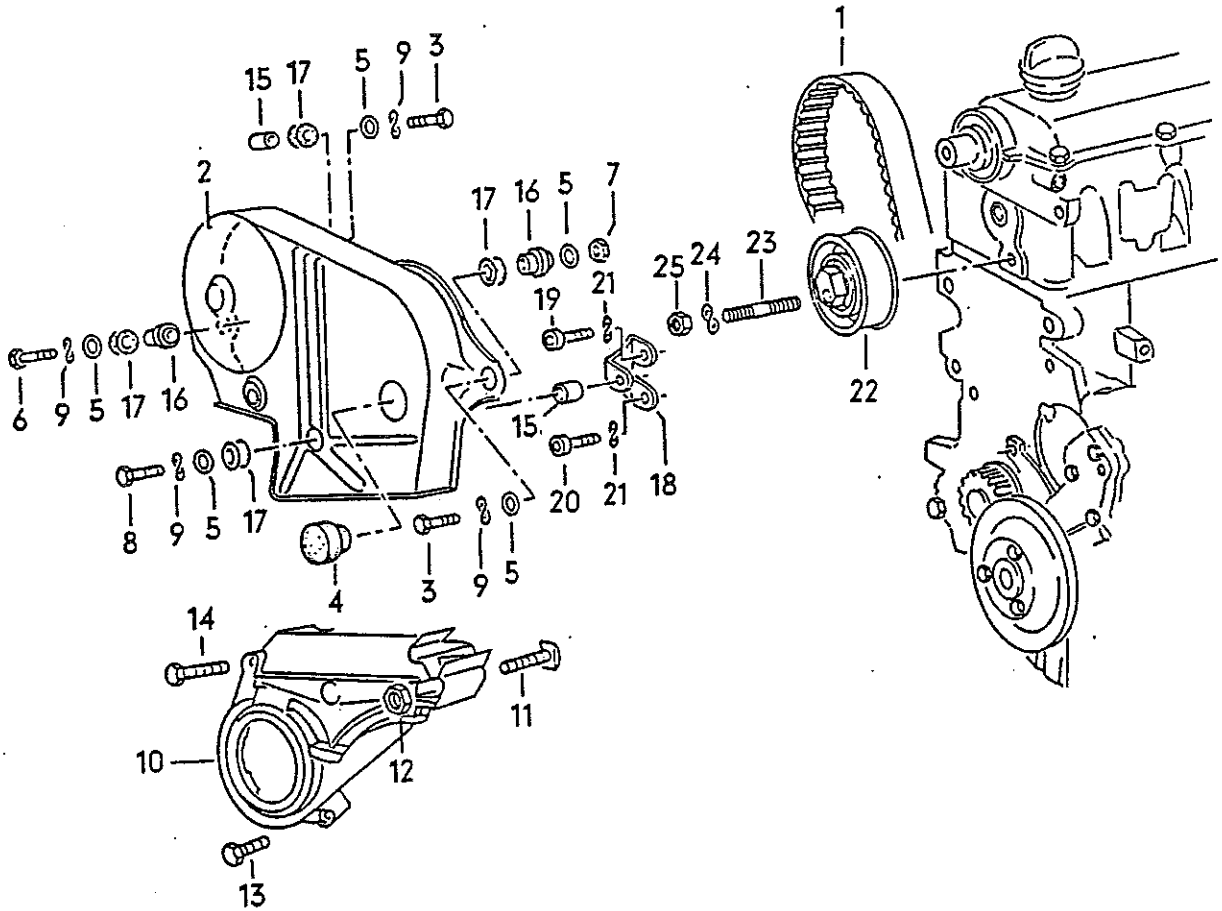


ILLUSTRATION 9
TIMING BELT COVER

KEY	PART NO.	DESCRIPTION	QUANTITY
1	V068 109 119 A	TOOTHED BELT	1
2	V068 109 121 C	TIMING BELT COVER UPPER	1
3	VN 010 220 3	BOLT, HEX. HD. M 6X30	2
4	V411 963 269	PLUG	1
5	VN 011 612 3	WASHER R 7	5
6	VN 010 222 8	BOLT, HEX. HD. M 6X22	1
7	VN 011 006 B	NUT, HEX, M 6	1
8	VN 010 215 13	BOLT, HEX. HD. M 6X15	2
9	VN 012 226 5	SPRING WASHER B 6	4
10	V068 109 127 A	TIMING BELT COVER LOWER	1
11	VN 900 534 01	T HEAD SCREW	1
12	VN 011 006 8	NUT, HEX. M 6	4
13	VN 010 215 13	BOLT, HEX. HD. M 6X15	1
14	VN 014 725 2	BOLT, CYLINDER HEAD M 8X25	1
15	V052 109 135	BUSHING	2
16	V056 109 135	BUSHING	2
17	V056 129 669	RUBBER MOUNTING	4
18	V068 109 179	BRACKET FOR TIMING BELT COVER	1
19	VN 014 709 1	SCREW, CHEESE HD. M 8X22	2
20	VN 014 712 3	SCREW, CHEESE HD. M 8X18	2
21	VN 012 241 11	SPRING WASHER B 8X15	4
22	V068 109 243 C	TENSIONING ROLLER	1
23	VN 900 803 01	BOLT, HEX. HD. M 10X45	1
24	VN 012 231 4	SPRING WASHER A 10	1
25	VN 011 133 4	NUT, HEX. M 10	1