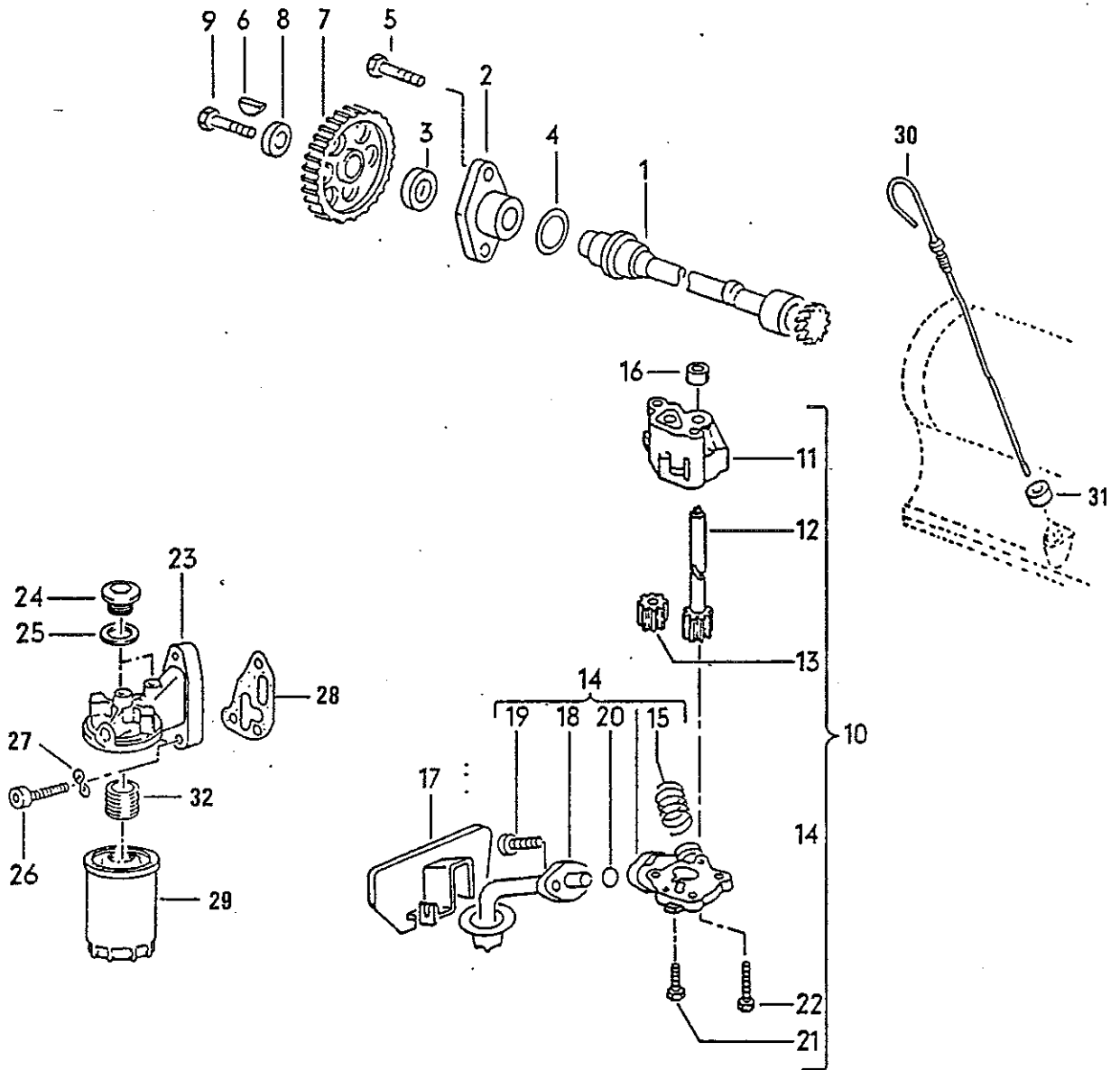


# 1984 GRUMMAN OLSON KUBVAN

## ILLUSTRATED PARTS MANUAL

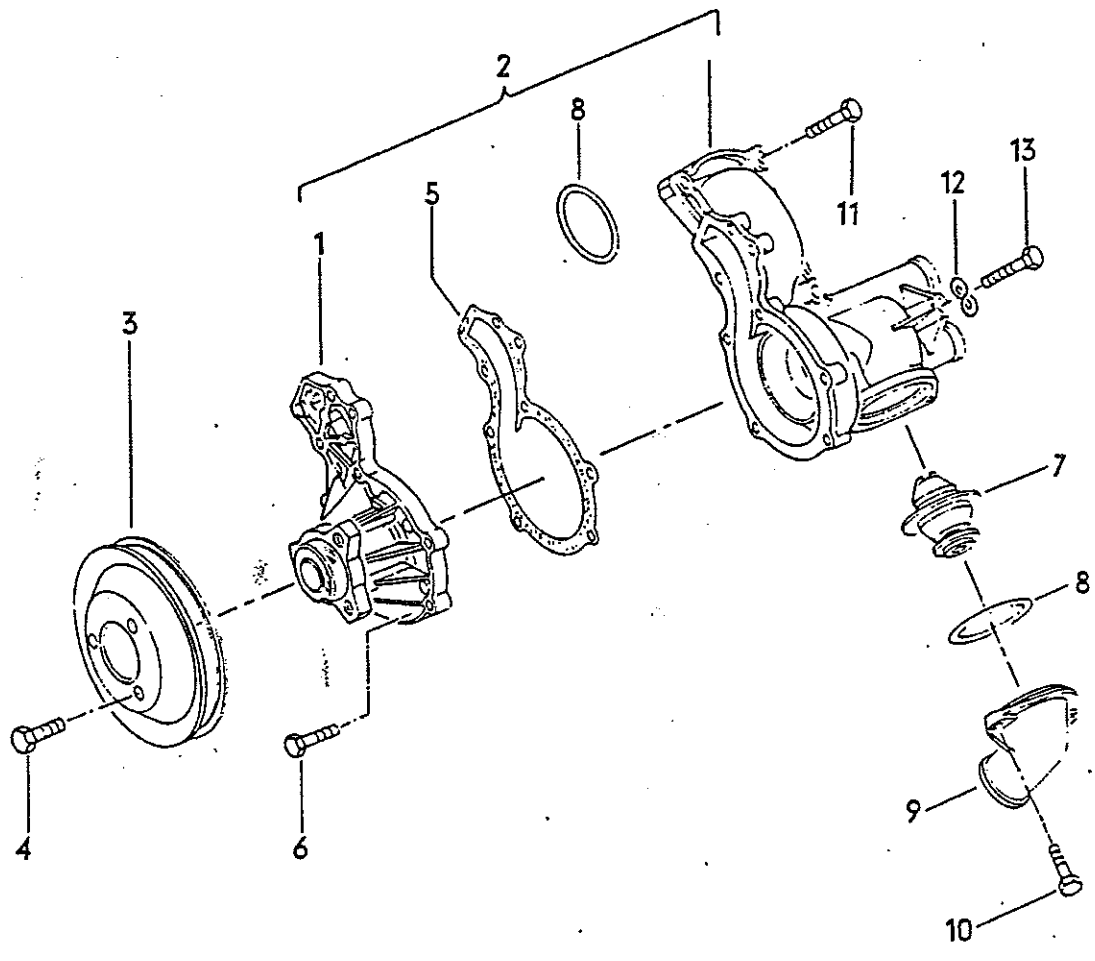
Engine  
Water cooling  
Fuel system  
Clutch  
Brake Booster

Portions of this manual are copyrighted 1983  
Volkswagen of America, Inc.  
Reprinted by permission of VWoA



**ILLUSTRATION 10**  
**OIL PUMP, OIL FILTER**

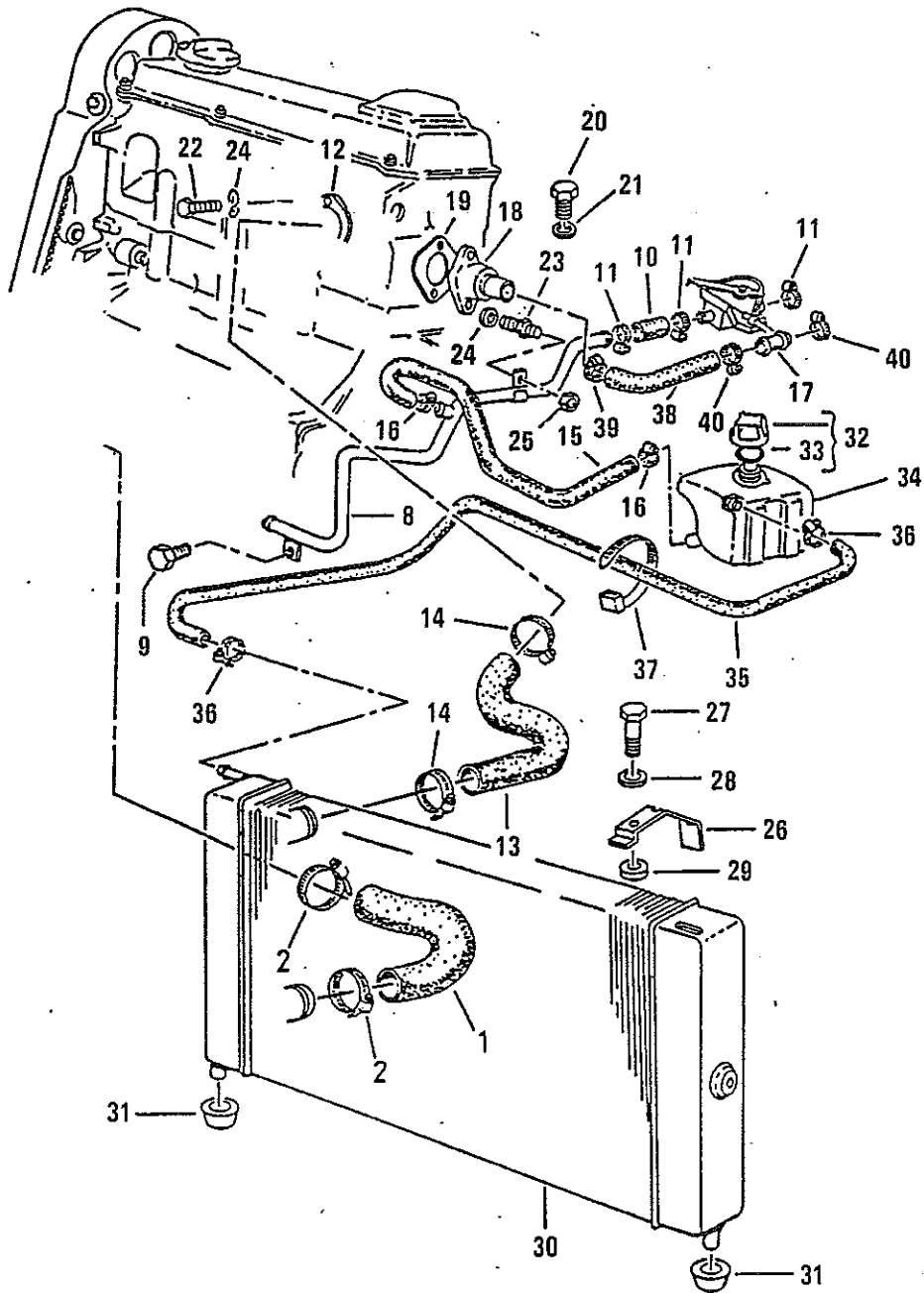
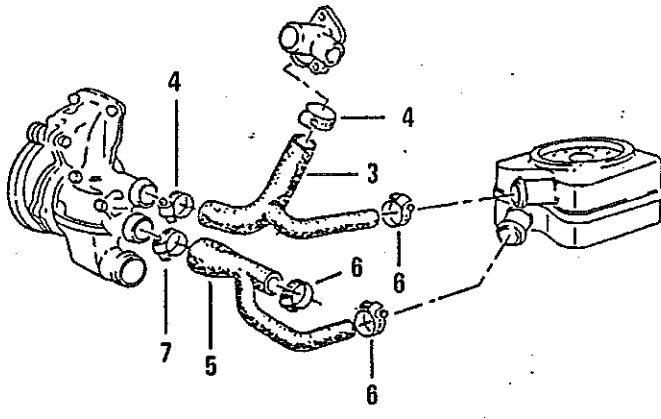
KEY	PART NO.	DESCRIPTION	QUANTITY
1	V068 115 017 C	INTERMEDIATE SHAFT	1
2	V056 115 033 A	GUIDE RING	1
3	V068 103 085 A	SEAL	1
4	V056 115 037	SEAL	1
5	VN 090 278 1	BOLT, HEX. HD. M 8X25	2
6	VN 012 708 2	WOODRUFF KEY 4.5	1
7	V068 115 021 A	PULLEY	1
8	V056 109 143	WASHER 19	1
9	VN 010 137 1	BOLT, HEX. HD. M 12X1.5X35	1
10	V068 115 105 D	OIL PUMP	1
11	V056 115 107	HOUSING	1
12	V068 115 115	SHAFT WITH GEAR	1
13	V056 115 123 A	GEAR	1
14	V055 115 151 E	COVER	1
15	V049 115 421	OIL PRESSURE SPRING	1
16	V056 115 167	CENTERING SLEEVE	1
17	V055 115 221 B	BAFFLE PLATE	1
18	V055 115 251 B	OIL SUCTION PIPE	1
19	V049 103 637 A	SCREW	2
20	VN 028 222 2	O-RING FOR SUCTION PIPE	1
21	VN 090 281 1	BOLT, HEX. HD. M 6X22	2
22	VN 010 375 1	BOLT, HEX. HD. M 8X75	2
23	V055 115 417 G	OIL FILTER FLANGE	1
24	VN 016 024 1	PLUG M 10X1	2
25	VN 013 806 2	GASKET A 10X14 FOR PLUG N 016 024 1	2
26	VN 014 725 2	BOLT, ALLEN HD. M 8X30	3
27	VN 012 241 11	SPRING WASHER B 8X15	3
28	V049 115 441	GASKET	1
29	V068 115 561 B	OIL FILTER	1
30	V055 115 611 F	OIL LEVEL DIPSTICK	1
31	V059 115 625	GASKET FOR OIL LEVEL DIPSTICK	1
32	V059 115 721	UNION	1



## ILLUSTRATION 11

### WATER PUMP

KEY	PART NO.	DESCRIPTION	QUANTITY
1	V068 121 005 A	HOUSING WITH IMPELLER (30MM HUB)	1
2	V068 121 010 AX	WATER PUMP (30 MM HUB) REMAN.	1
3	V068 121 031 G	V-BELT PULLEY (30 MM HUB)	1
4	VN 090 286 1	BOLT TORX. HD. M 8X12	3
(4)	VN 014 706 2	BOLT, FILSTR. HD. M 8X12	3
5	V056 121 041	GASKET	1
6	VN 090 281 1	BOLT, HEX. HD. M 6X22	7
7	V068 121 113 B	THERMOSTAT	1
8	V059 121 119	SEALING WASHER B 6	2
9	V055 121 121 A	COVER FLANGE	1
10	VN 090 281 1	BOLT, HEX. HD. M 6X22	2
11	VN 090 283 1	BOLT, HEX. HD. M 8X30	2
12	VN 012 241 11	SPRING WASHER B 8X15	2
13	VN 010 350 8	BOLT, HEX. HD. M 8X50	2



## ILLUSTRATION 14

### WATER COOLING

KEY	PART NO.	DESCRIPTION	QUANTITY
1	<del>V171 121 051 G</del> <del>Gr 11-03013</del> Gr 11-03642	WATER HOSE, LOWER FROM RADIATOR TO WATER PUMP	1
2	VN 024 507 4	CLAMP LA 30-45	2
3	V068 121 053 S	WATER HOSE, FROM WATER PUMP TO FLANGE AND OIL COOLER	1
4	VN 024 511 3	CLAMP LA 23-35	2
5	V068 121 058	WATER HOSE, FROM WATER PUMP TO WATER PIPE AND OIL COOLER	1
6	VN 024 510 3	CLAMP LA 16-25	1
7	VN 024 511 3	CLAMP LA 23-35	1
8	V055 121 065 J	WATER PIPE, ALSO USE IF REQUIRED 055 121 324 + N 024 5103	1
9	VN 010 249 4	BOLT, HEX. HD. M 10X15 (WATER PIPE TO BLOCK)	1
10	OBTAIN LOCALLY	WATER HOSE 16X3.5 65 MM -2-9/16" FROM WATER PIPE TO HEATER VALVE	1
11	VN 024 510 3	CLAMP LA 16-25	3
12	V052 121 091	GASKET	1
13	<del>V171 121 101 G</del> <del>Gr 11-03014</del> Gr 11-03717	WATER HOSE, UPPER FROM RADIATOR TO FLANGE	1
14	VN 024 507 4	CLAMP LA 30-45	2
15	V171 121 109 E	WATER HOSE FROM WATER PIPE TO EXPANSION TANK	2
16	VN 024 510 3	CLAMP LA 16-25	2
17	V171 121 140 A	HOSE CONNECTION	1
18	V068 121 145 D	HEATER FLANGE, ALSO USE N 016 159 1 + N 013 806 2 IF REQUIRED	1
19	V056 121 149	GASKET	1
20	VN 016 159 1	PLUG, USE ONLY IF REQUIRED	1
21	VN 013 806 2	SEALING WATER A 10 X 14	1
22	VN 010 217 9	BOLT, HEX. HD. M 6X20	2
23	V175 121 150	BOLT, GROUND WIRE TO HEATER FLANGE	2
24	VN 012 227 3	SPRING WASHER B 6	4
25	VN 011 006 8	NUT, HEX. M6	2
26	V175 121 267	MOUNTING BRACKET	2
27	VN 010 216 12	BOLT, HEX. HD. M 6X18	2
28	VN 012 227 3	SPRING WASHER	2
29	VN 011 666 3	WASHER B 6.4	2
30	V171 121 253 BH	RADIATOR, HEAVY DUTY	1
31	V171 121 276 D	RUBBER MOUNTING WASHER	2
32	V171 121 321 D	FILLER CAP	1
33	V171 121 327	SEAL	1
34	V171 121 407 E	EXPANSION TANK	1
—	VN 020 281 1	HOSE, 7X3	*
35		80 MM 31-1/2" FROM EXPANSION TANK TO RADIATOR	1
36	VN 024 509 4	CLAMP LB 12-20	2

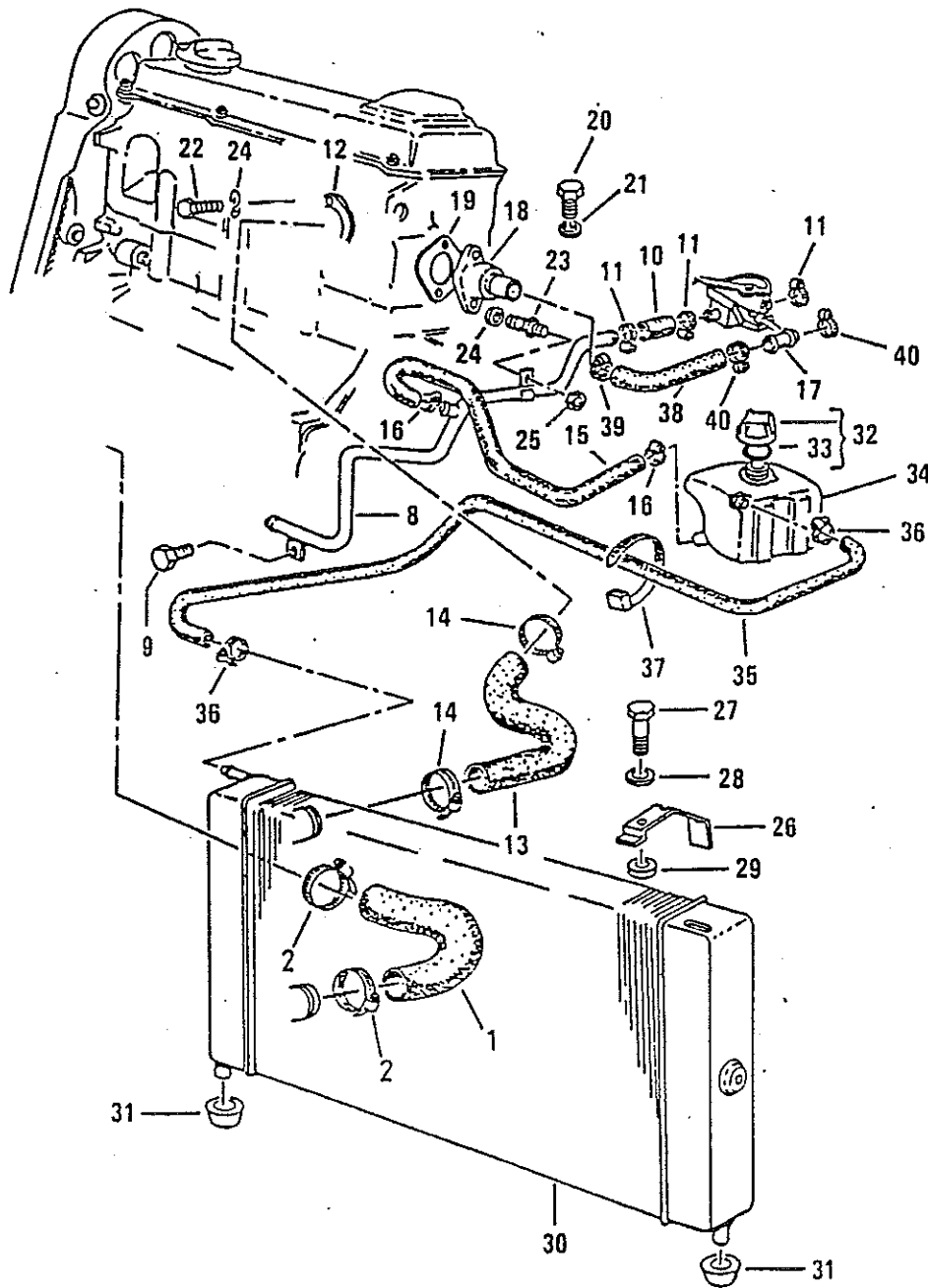
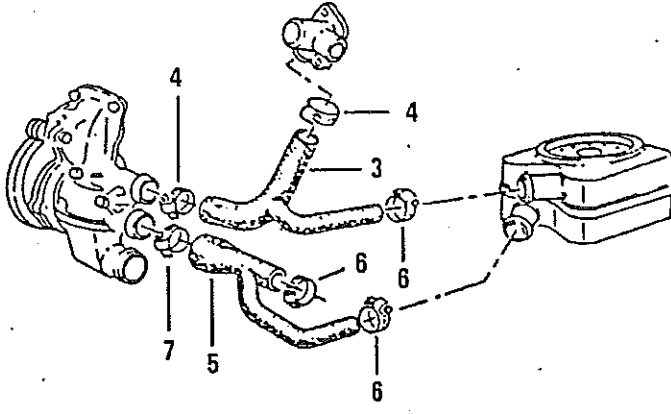
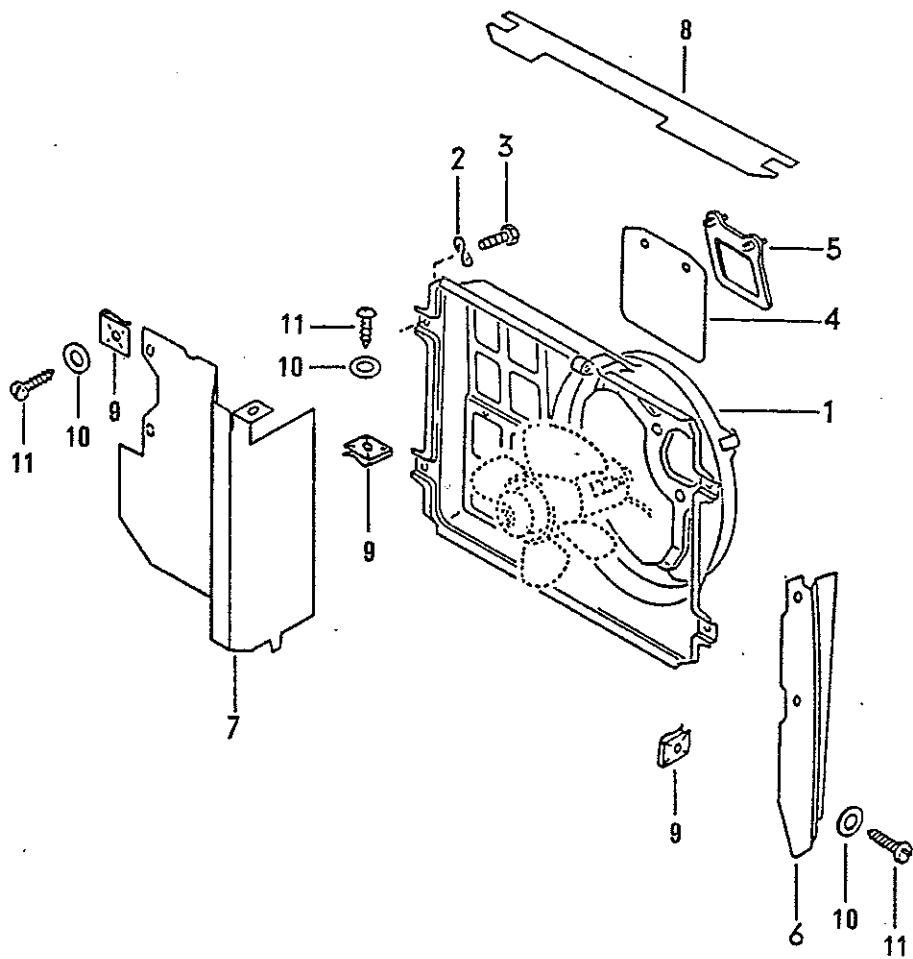




ILLUSTRATION 14 (cont'd)

WATER COOLING

KEY	PART NO.	DESCRIPTION	QUANTITY
37	VN 020 910 4	TIE STRAP 6.5X150	2
38	V171 121 611 E	WATER HOSE FROM HEATER FLANGE TO CONNECTION PIECE	1
39	VN 024 511 3	CLAMP LA 23-35	1
40	VN 024 510 3	CLAMP LA 16-25	1
—	V171 198 121	BRACKET KIT FOR INSTALLING RADIATOR	1



## ILLUSTRATION 16

### AIR DUCT

KEY	PART NO.	DESCRIPTION	QUANTITY
1	V171 121 205 F	FAN HOUSING	1
2	VN 012 226 5	SPRING WASHER B 6	4
3	VN 901 248 01	TAPPING SCREW, 6.3X15	8
4	V171 121 223	FLAP	2
5	V171 121 227 B	BRACKET	2
6	V175 121 283 B	AIR GUIDE FOR RADIATOR, LEFT	1
7	V175 121 284 D	AIR GUIDE FOR RADIATOR, RIGHT	1
8	V175 121 284 F	AIR DUCT CARDBOARD, UPPER	1
9	VN 015 448 1	SPEED NUT B 4.2X16	X
10	VN 011 664 4	WASHER B 4.3	X
11	V175 853 999	TAPP. SCREW, FILL. HD.	X

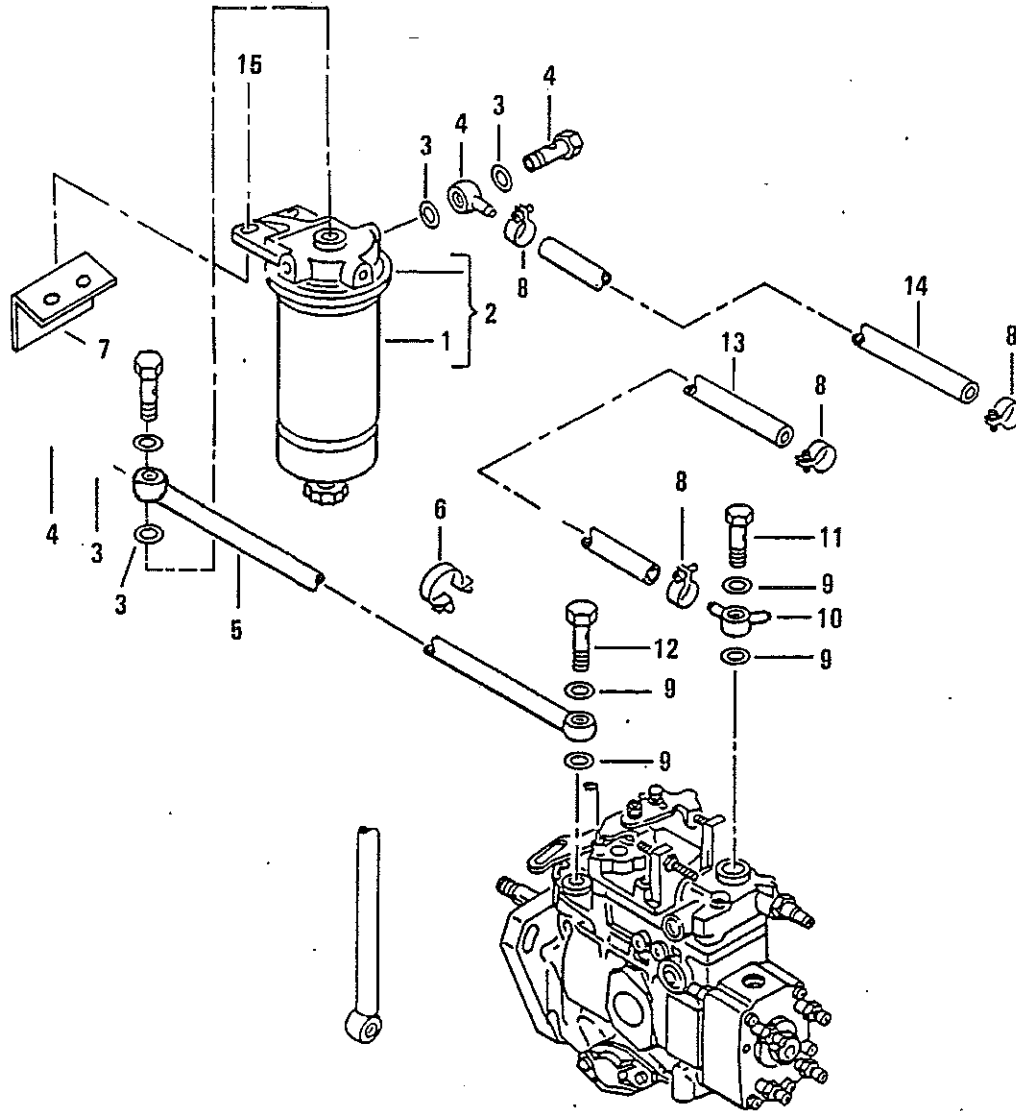


ILLUSTRATION 19

FUEL FILTER

KEY	PART NO.	DESCRIPTION	QUANTITY
1	V068 127 177 B	FILTER INSERT	1
2	V068 127 401	FUEL FILTER	1
3	VN 013 814 2	SEAL A 14X18	4
4	VN 015 820 1	ADAPTER 10X6	1
5	VN 068 130 309	FUEL LINE	1
6	V321 971 847 C	CLIP 13.5 MM	1
7	G82230029	BRACKET, FUEL FILTER MTG.	1
8	VN 900 213 01	CLAMP 11-15	4
9	VN 013 812 2	SEAL A 12X15.5	4
10	VN 900 736 01	ADAPTER LL 8X6/3	1
11	V068 130 157	UNION NUT W/RETURN FLOW RESTRICTOR	1
12	VN 021 071 2	UNION NUT LL 8	1
—	VN 020 281 1	HOSE, 7X3	*
13		700 MM—27-9/16"	1
14		260 MM—10-1/4"	1
15	G11-17046	CAP SCREW HEX HD	2
(15)	G11-17955	WASHER	2
(15)	G11-17356	NUT	2

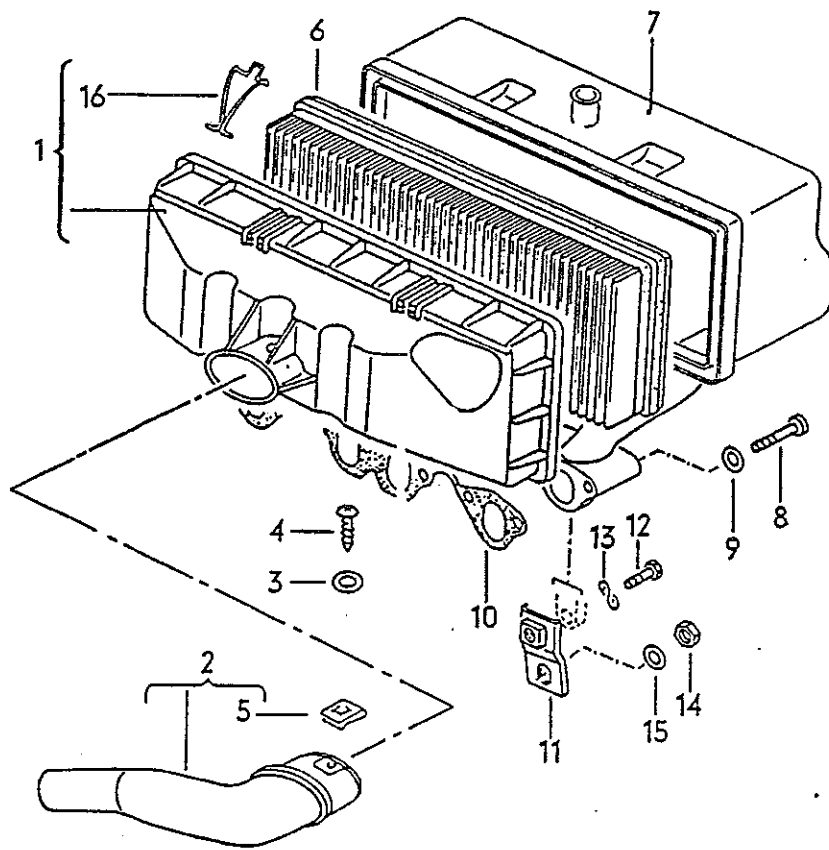


ILLUSTRATION 23

AIR CLEANER COVER, INTAKE MANIFOLD

KEY	PART NO.	DESCRIPTION	QUANTITY
1	V068 129 605 C	AIR CLEANER COVER	1
2	V175 129 615	INTAKE PIPE	1
3	VN 011 523 7	WASHER A 5.3	1
4	VN 013 964 7	TAPP. SCREW, FILL. HD. B 4.2X16	1
5	VN 015 448 1	SPEED NUT B 4.2X16	X
6	V069 129 620	FILTER INSERT	1
7	V068 129 713 A	INTAKE MANIFOLD	1
8	VN 014 714 5	SCREW, CHEESE HD. M 8X60	6
9	VN 011 558 6	WASHER 8.4	6
10	V049 129 717 A	GASKET	1
11	V068 129 721 B	BRACKET	1
12	VN 010 233 6	BOLT, HEX. HD. M 8X28	1
13	VN 012 241 11	SPRING WASHER B 8X15	1
14	V175 129 650	NUT, HEX. M 8 (SELF-LOCKING)	1
15	VN 011 525 13	WASHER A 8.4	1
16	V068 129 797	RETAINING WIRE	4

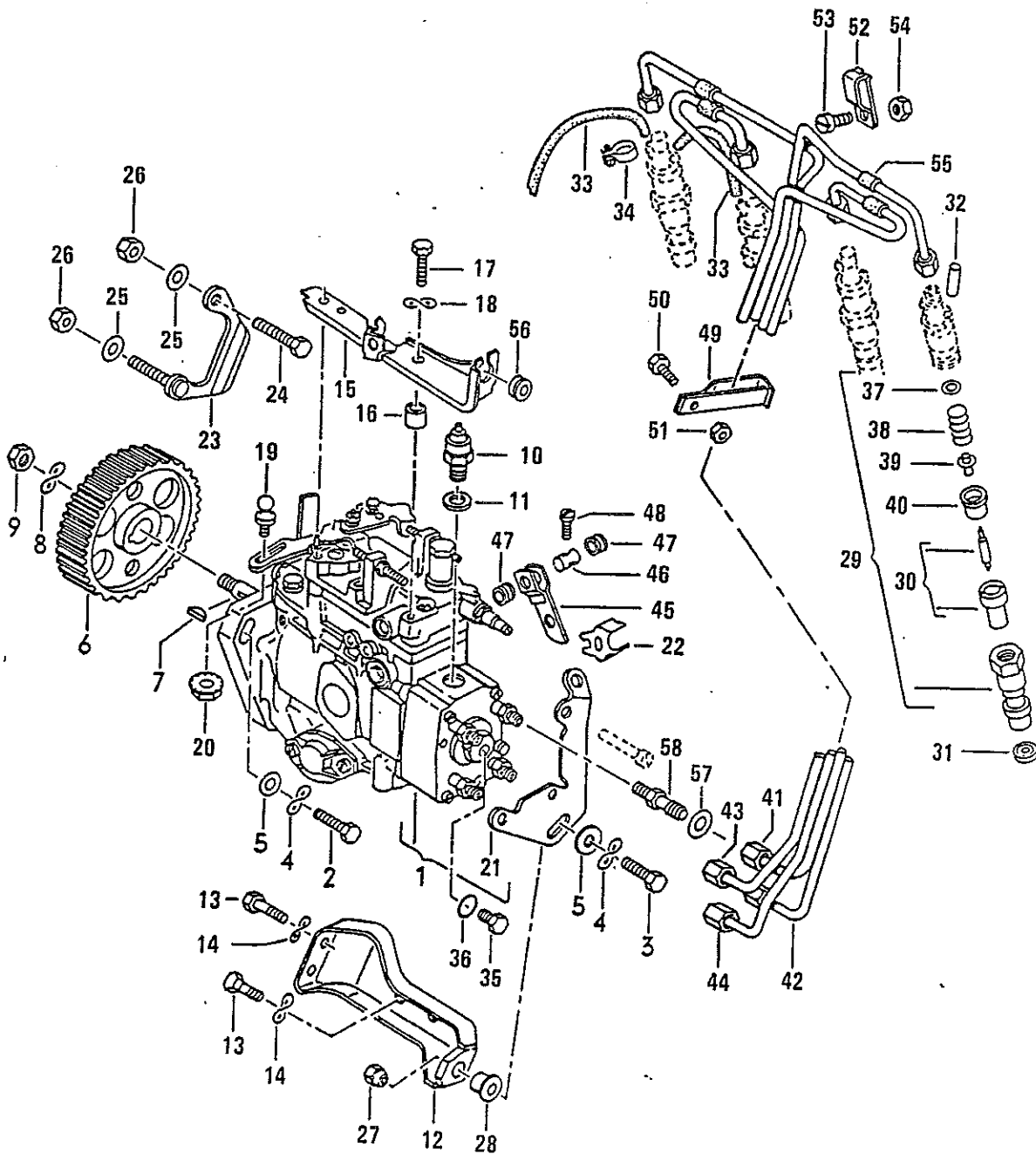




ILLUSTRATION 25

INJECTION PUMP, INJECTOR, DELIVERY PIPES

KEY	PART NO.	DESCRIPTION	QUANTITY
1	V068 130 109 C	INJECTION PUMP	1
(1)	V068 130 109 CX	INJECTION PUMP REMANUFACTURED	1
(1)	V068 130 109 D	INJECTION PUMP AUTO. TRANS.	1
(1)	V068 130 109 DX	INJECTION PUMP AUTO. TRANS.	1
2	VN 010 244 11	BOLT, HEX. HD. M 8X30	3
3	VN 010 332 4	BOLT, HEX. HD. M 8X32	1
4	VN 012 241 11	SPRING WASHER B 8X15	4
5	V111 129 720	WASHER 8.4X18	3
(5)	V861 827 559	WASHER	1
6	V068 130 111	TIMING BELT PULLEY	1
7	VN 012 706 1	WOODRUFF KEY 3X6.5	1
8	VN 012 232 3	SPRING WASHER B 12	1
9	VN 011 030 4	NUT, HEX. M12	1
—	V175 130 116 A	COVER FOR INJECTION PUMP	1
10	V068 130 135	FUEL CUT-OFF SOLENOID (BOSCH)	1
11	V068 130 139	SEAL (BOSCH) FOR FUEL CUT-OFF	1
12	V068 130 143 A	SUPPORT	1
13	VN 010 238 13	BOLT, HEX. HD. M 8X15	4
14	VN 012 241 11	SPRING WASHER B 8X15	4
15	V068 130 142 A	BRACKET FOR VEHICLES WITH UP SHIFT INDICATOR	1
(15)	V068 130 147	BRACKET	1
(15)	V068 130 147 A	BRACKET, AUTO. TRANS.	1
16	V052 109 135	BUSHING	1
17	VN 010 222 8	BOLT, HEX. HD. M 6X22	1
18	VN 012 227 3	SPRING WASHER A 6	2
19	VN 901 794 01	BALL PIN C 8	1
(19)	VN 901 789 01	BALL PIN C 8, AUTO. TRANS.	1
20	V321 945 299	SELF LOCKING NUT, HEX. M 5	1
21	V068 130 149 A	BRACKET	1
22	V068 130 153	STOP FOR COLD STARTING AID	1
23	V068 130 173 A	RETAINER	1
24	VN 010 244 11	BOLT, HEX. HD. M 8X30	1
25	V111 129 720	WASHER 8.4X18	1
26	VN 022 146 12	NUT, HEX. VM 8 (SELF LOCKING)	1
27	V068 130 197	TAPERED NUT	1
28	V068 130 199	BUSHING	1
29	V068 130 201 C	INJECTOR COMPLETE	4
(29)	V068 130 201 CX	INJECTOR REMANUFACTURED	4
(29)	V068 130 201 E	INJECTOR COMPLETE	4
(29)	V068 130 201 EX	INJECTOR REMANUFACTURED	4
30	V068 130 211 B	INJECTOR	4
31	V068 130 219	SEALING WASHER	4
32	V068 130 229	CAP	1
33	VN 020 353 5	HOSE 3.5X2, CUT TO APPROX. LENGTH	1
34	VN 900 455 01	CLIP 5X8	7
35	V068 130 231	PLUG	1
36	VN 013 807 1	SEAL A 8X11.5	1

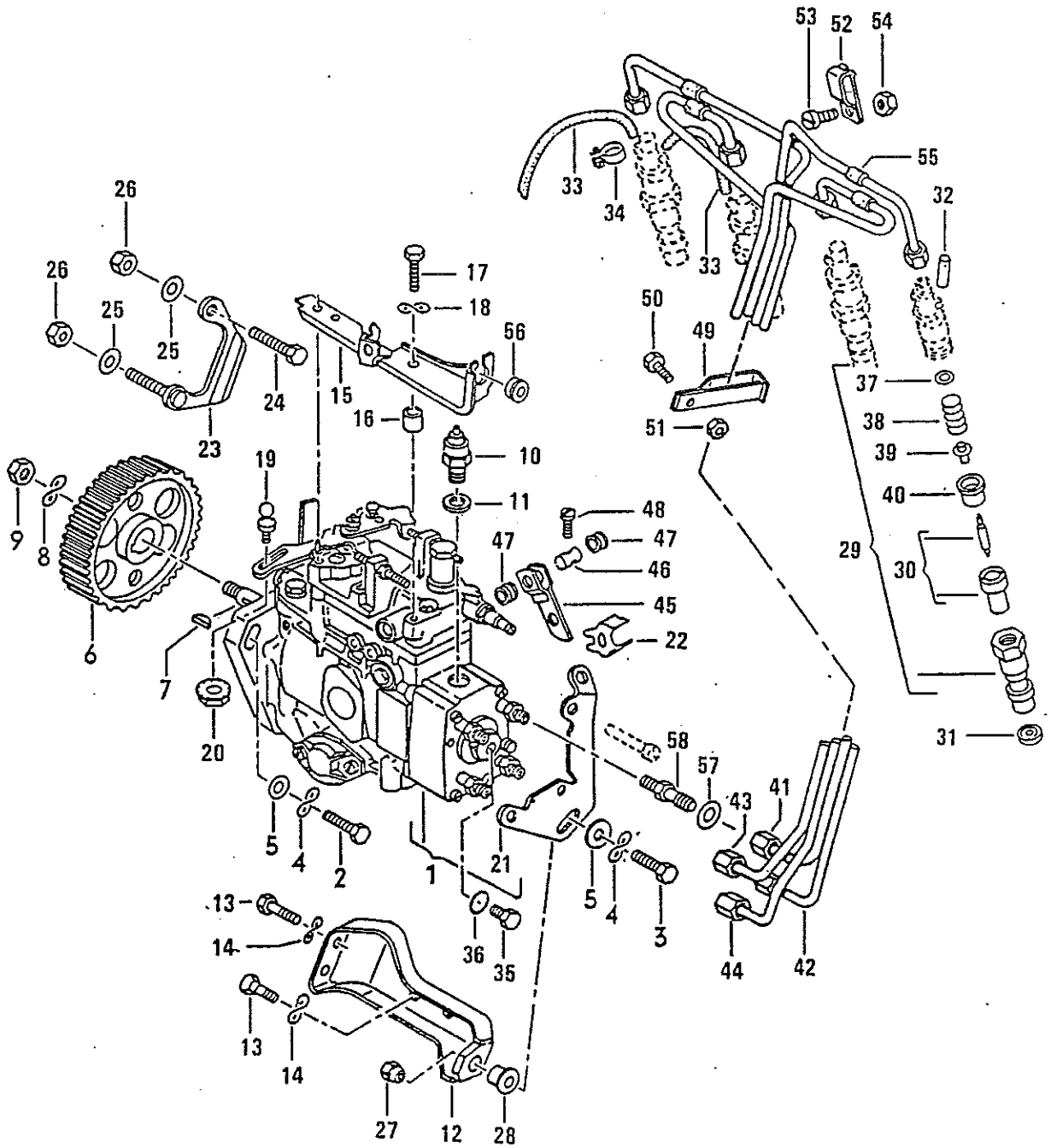
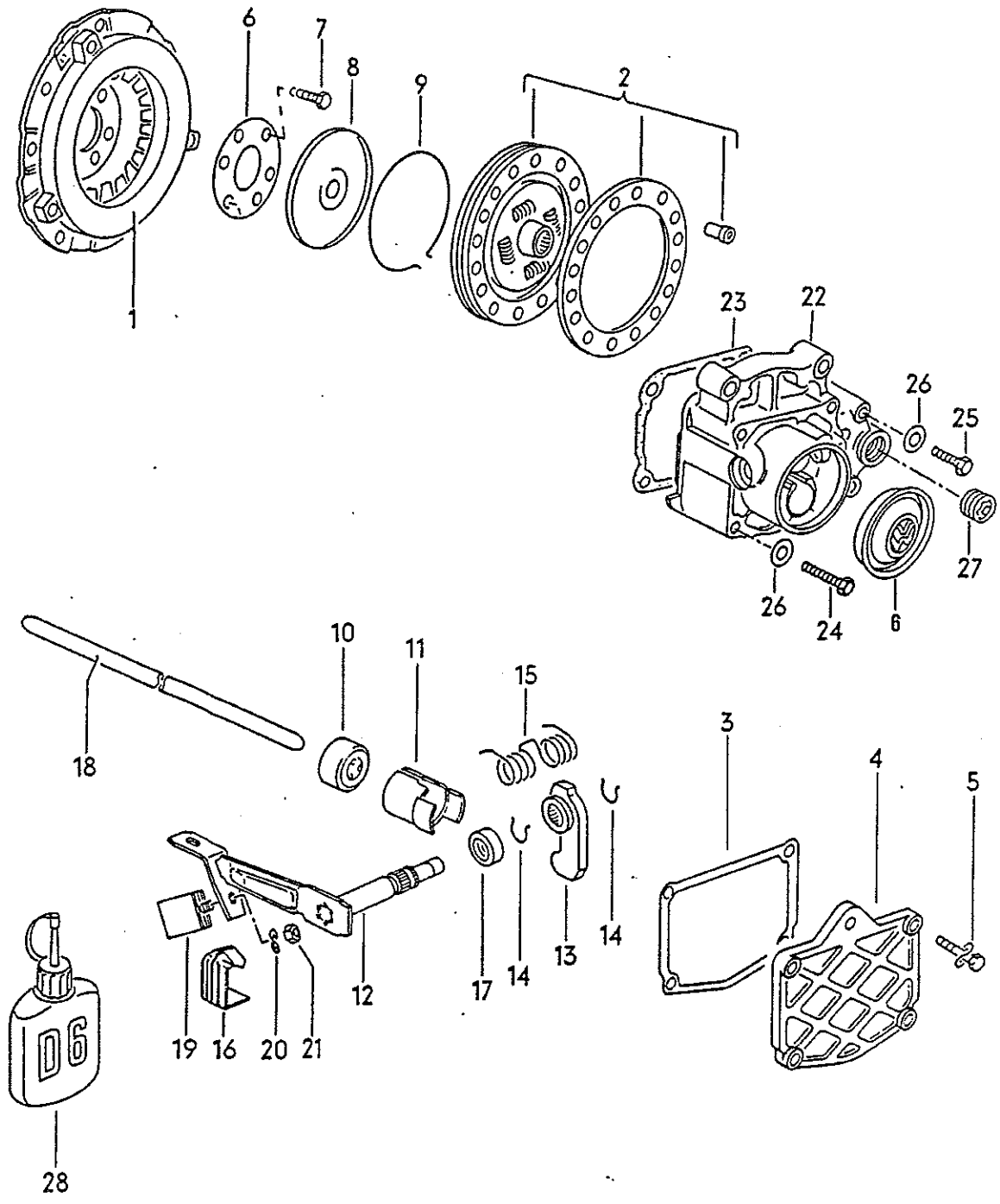


ILLUSTRATION 25 (cont'd)

INJECTION PUMP, INJECTOR, DELIVERY PIPES

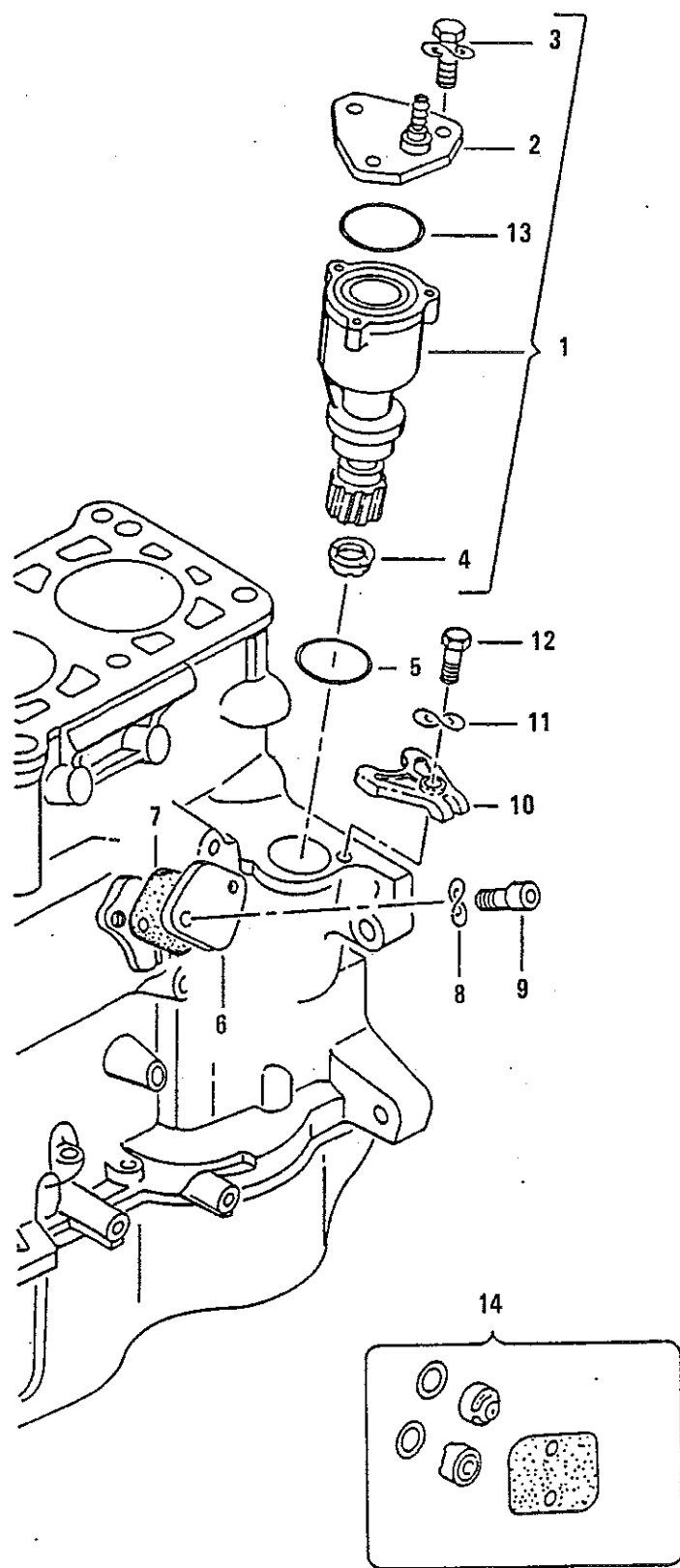
KEY	PART NO.	DESCRIPTION	QUANTITY
37	V068 130 251	SHIM 1.00	X
(37)	V068 130 252	SHIM 1.05	X
(37)	V068 130 253	SHIM 1.10	X
(37)	V068 130 254	SHIM 1.15	X
(37)	V068 130 255	SHIM 1.20	X
(37)	V068 130 256	SHIM 1.25	X
(37)	V068 130 257	SHIM 1.30	X
(37)	V068 130 258	SHIM 1.35	X
(37)	V068 130 259	SHIM 1.40	X
(37)	V068 130 260	SHIM 1.45	X
(37)	V068 130 261	SHIM 1.50	X
(37)	V068 130 262	SHIM 1.55	X
(37)	V068 130 263	SHIM 1.60	X
(37)	V068 130 264	SHIM 1.65	X
(37)	V068 130 265	SHIM 1.70	X
(37)	V068 130 266	SHIM 1.75	X
(37)	V068 130 267	SHIM 1.80	X
(37)	V068 130 268	SHIM 1.85	X
(37)	V068 130 269	SHIM 1.90	X
(37)	V068 130 270	SHIM 1.95	X
38	V068 130 271 B	INJECTOR SPRING	4
39	V068 130 273 B	THRUST PIN	4
40	V068 130 275 B	NOZZLE HOLDER	4
41	V068 130 301	DELIVERY PIPE BOSCH CYLINDER 1	1
42	V068 130 302	DELIVERY PIPE BOSCH CYLINDER 2	1
43	V068 130 303	DELIVERY PIPE BOSCH CYLINDER 3	1
44	V068 130 304	DELIVERY PIPE BOSCH CYLINDER 4	1
45	V068 130 331	LEVER FOR COLD STARTING AID	1
46	V068 130 335	BOLT	1
47	V068 130 337	BUSHING	2
48	VN 010 261 3	BOLT, HEX. HD. M 4 12	1
49	V068 130 421	CLIP	1
50	VN 010 710 8	SCREW, CHEESE NO. AM 6X10	1
51	VN 011 006 8	NUT, HEX. M 6	1
52	V068 130 431	CLIP	2
53	VN 010 710 8	SCREW, CHEESE HD. AM 6X10	2
54	VN 011 006 8	NUT, HEX. M 6	2
55	V068 130 441	HOSE	8
56	V171 711 512	BUSHING	1
57	V068 130 787 A	SEAL FOR ADAPTER	4
58	V068 130 795	ADAPTER	4



## ILLUSTRATION 32

### CLUTCH

KEY	PART NO.	DESCRIPTION	QUANTITY
1	V068 141 025	CLUTCH PRESSURE PLATE, 200 DIA, SUPPLIED ALTERNATIVELY: 068 141 025 A	1
(1)	V068 141 025 X	CLUTCH PRESSURE PLATE, REMANUFACTURED	1
2	V068 141 031 R	CLUTCH DISC., 200 DIA. SUPPLIED ALTERNATIVELY: 068 141 031 S/T 068 141 032	1
(2)	V068 141 032 RX	CLUTCH DISC. REMANUFACTURED	1
3	V020 141 059	GASKET	1
4	V020 141 063	END PLATE FOR VEHICLES WITH 4 SPEED MANUAL TRANSMISSION	1
5	VN 090 209 1	BOLT, HEX. HD. M 7X25	4
6	V055 141 069 B	LOCK PLATE	1
(6)	V020 141 073 A	END PLATE, MANUAL TRANS.	1
7	VN 900 720 01	BOLT, HEX. HD. M 10.1X20	6
8	V055 141 124 E	THRUST PLATE	1
9	V055 141 130 E	RETAINING RING	1
10	V020 141 165 B	RELEASE BEARING FOR 5 SPEED MANUAL TRANSMISSION	1
11	V020 141 181	GUIDE SLEEVE	1
12	V020 141 701 H	OPERATING SHAFT	1
13	V020 141 709 B	CLUTCH OPERATING LEVER FOR 5 SPEED MANUAL TRANSMISSION	1
14	V020 141 710	LOCK RING	2
15	V020 141 723 A	RETURN SPRING FOR 5 SPEED MANUAL TRANSMISSION	1
16	V020 141 726	STOP CLIP FOR OPERATING SHAFT	1
17	V020 141 733	RUBBER RING	1
18	V020 141 741 B	PUSH ROD	1
19	V020 141 781	BALANCE WEIGHT FOR OPERATING SHAFT	X
20	VN 012 230 6	SPRING WASHER B 10	X
21	VN 011 134 5	NUT, HEX. M 10	X
22	V020 301 211	HOUSING FOR 5 SPEED MANUAL TRANSMISSION VEHICLES	1
23	V020 301 215	GASKET FOR VEHICLES WITH 5 SPEED	1
24	VN 010 285 7	BOLT, HEX. HD. M 8X85	4
25	VN 010 377 1	BOLT, HEX. HD. M 8X62	2
26	VN 011 558 6	WASHER 8.4	6
27	V111 301 127 E	PLUG M 24X1.5	1
28	VD 000 600	LIQUID LOCKING SOLUTION 10 CCM	X



**ILLUSTRATION 33**  
**VACUUM PUMP FOR BRAKE BOOSTER**

KEY	PART NO.	DESCRIPTION	QUANTITY
1	V068 145 101 C	VACUUM PUMP	1
(1)	V068 145 101 CX	VACUUM PUMP REMANUFACTURED (SEE APPLICATION ABOVE)	1
2	V068 145 111A	COVER	1
3	VN 090 245 1	BOLT, HEX. HD. M 6X18 23	3
4	V068 145 117 B	SEALING WASHER	1
5	V068 145 119	SEALING WASHER	1
6	V063 103 113	COVER PLATE	1
7	V059 127 311 A	GASKET	1
8	VN 012 241 11	SPRING WASHER B 8X15	2
9	VN 014 712 3	SCREW M 8X18	2
10	V035 905 251 A	BRACKET	1
11	VN 012 241 11	SPRING WASHER B 8X15	1
12	VN 010 242 13	BOLT, HEX. HD. M 8X25	1
13	VN 901 271 01	SEAL 54.2X5	1
14	V068 198 819	REPAIR KIT, VALVES FOR 068 145 101 B	1

